



# Global Forest Observations Initiative

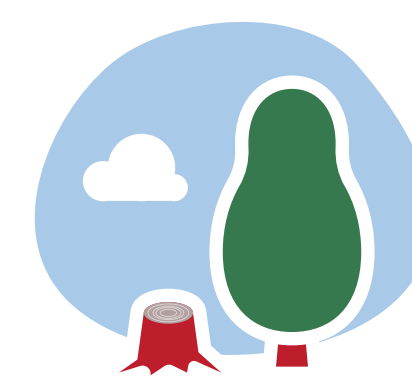
a partnership for tracking forests for climate action

## WHY IS FOREST MONITORING IMPORTANT FOR COUNTRIES?

Better forest management is underpinned by better forest monitoring. Thanks to recent advances in technology and a boom in the availability of data, many developing countries are establishing National Forest Monitoring Systems (NFMS) and associated Emissions Measurement, Reporting and Verification (MRV) procedures to:



track progress towards their **Nationally Determined Contributions (NDCs)** under the Paris Climate Change Agreement



reduce emissions from deforestation, forest degradation and related activities, commonly known as **REDD+**



contribute to achieving the **Sustainable Development Goals (SDGs)**



enable **national policies and programmes** that improve sustainable land use

## WHAT IS THE GLOBAL FOREST OBSERVATIONS INITIATIVE (GFOI)?

A global partnership coordinating international support in forest monitoring to help developing countries address **their international reporting and national information needs.**



\* of GFOI guidance and related materials

## WHO ARE THE PARTNERS?

GFOI is a voluntary partnership of **countries and international organizations** that are supporting to build up forest Monitoring, Reporting and Verification (MRV) capacities in developing countries.

**It is open to new partners!**

### Lead partners include:

- Governments of Australia, Germany, Norway the UK and the USA
- Committee on Earth Observation Satellites (CEOS)
- European Space Agency (ESA)
- Food and Agriculture Organization of the United Nations (FAO)
- World Bank

### Other contributing partners are:

- Intergovernmental Panel on Climate Change (IPCC)
- Secretariat of the United Nations Framework Convention on Climate Change (UNFCCC)
- Academia, NGOs, individual experts and the private sector

GFOI is a flagship of the Group on Earth Observations (GEO)  
The GFOI Office @FAO provides secretariat services

## HOW DOES GFOI WORK?



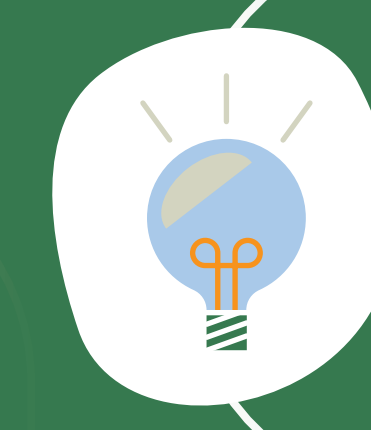
### Method and Guidance Documentation (MGD)

User-friendly methods and guidance materials that address UNFCCC requirements for REDD+ and comply with the IPCC.



### Capacity Building

Joint capacity building for effective knowledge and technology transfer.



### Research and Development

Addressing knowledge gaps, pursue progress and continuous improvements in forest monitoring.



### Data

Supporting the acquisition, availability, accessibility and capacity for countries to use data and tools.

## KEY RESULTS

Coordinating partners' work in **more than 60 developing countries** across the three major forested regions Asia, Africa and Latin America to significantly advance forest monitoring and MRV capacity.

Working with space agencies to help make available and expand **wall-to-wall coverage of the world's forests from multiple satellite sensors.**

Improving the ability of countries to **access and use space data through training on tools and platforms** such as Collect Earth, SEPAL and many others.

**User-friendly methods and guidance** which complies with the IPCC published and disseminated widely.

WANT TO **KNOW MORE OR JOIN?**

[office@gfoi.org](mailto:office@gfoi.org)

[twitter.com/gfoi\\_forest](https://twitter.com/gfoi_forest)

[facebook.com/gfoi1](https://facebook.com/gfoi1)

[www.gfoi.org](http://www.gfoi.org)